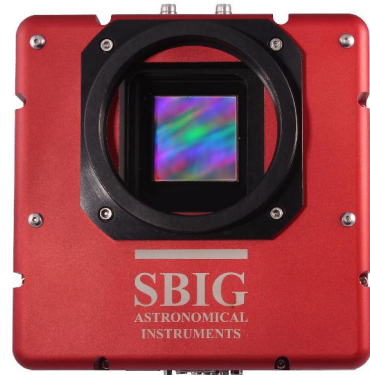
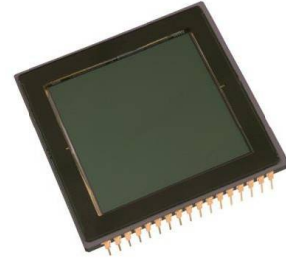




STX-16801

- KAF-16801 Non Anti Blooming CCD
- 4096 x 4096 array, 9 x9 micron pixels
- 1.8 MHz 16-bit digitization
- USB 2.0 interface & 10/100 Ethernet
- Full Frame Image Buffer
- TEC Forced Air Cooling
- Water Circulation Ready
- Programmable cooling to 50°C below ambient $\pm 0.1^{\circ}\text{C}$
- Precision time delayed integration mode readout
- Programmable fan speed for low / zero vibration
- Field upgradeable firmware
- Fused silica windows
- Runs from single 12V supply with voltage monitor
- Precision time delayed integration (TDI)
- Programmable fan speed for low / zero vibration
- TTL port within 500 microseconds of rising edge of trigger
- Fused silica window
- Dark Current, (typical) $<0.1 \text{ e}^-/\text{pixel}/\text{sec}$ (-25°C).
- System Noise, (typical) 9 e- RMS at 1.8 MHz
- Shutter, Even Illumination

- Astronomical Wide field Survey
- Photometry
- Radiography
- Optical testing
- Pannel Inspection



Optional Accessories



FW7-STX

Standard 7-Position Filter Wheel for the STX. Holds seven 50mm square filters.



FW5-STX

Standard Position Filter Wheel for the STX. Holds five 65mm square filters.



AO-X

The AO-X is a new large aperture AO for the STX and STXL cameras.



STT/STXL/STX

Remote Guide Head



STXL/STX STX-GUIDER

