

Aluma 77-00

The Aluma 77-00 has a back-illuminated full frame 262,000 pixel CCD with exceptionally high quantum efficiency.

Aluma is designed to operate either via USB 2.0 or WiFi 802.11 b/g/n. Fast low-noise readout. Aluma can be operated from a tablet or smartphone, or from a Windows, Macintosh, or Linux PC.

Multi-Platform Operation

Designed from the ground-up to support operation on any modern computing platform, Aluma is compatible with iOS, Android, Windows, Macintosh, and Linux. Fully-documented and supported drivers are available for all platforms, including ASCOM drivers. The Aluma camera interface specification is fully documented, supporting the development of fully custom applications.

Software Included

All Aluma models ship with MaxIm LT for Windows. In addition our new Aluma software for iOS and Android is under development. Aluma also supports third-party applications through ASCOM and native drivers.

Mechanical Shutter

The Aluma 77-00 has an even illumination shutter perfect for photometric applications. The high reliability mechanical shutter facilitates accurate dark/bias calibration frames.

Efficient 2-Stage TE cooling

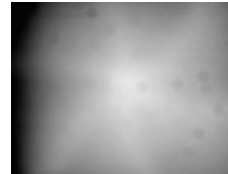
The Aluma uses two-stage TE cooling, twin variable-speed fans and a heat sink design optimized using computer thermal flow simulation. Cooling Delta up to 50C with forced air.

External TTL trigger input and output



- Optional Adaptive Optics
- Optional Self tracking unit
- Optional 8 position filter wheel
- Optional Secondary tracking Camera

CCD	E2V CCD 77-10
Array Size (pixels)	512 x 512
Pixel Size	24x 24 microns
Imaging Area	12.3 x 12.3 mm
Imaging Diagonal	17.3 mm
Read Noise	7 e-
Linear Full Well (typical)	300K electrons
Dynamic Range	83 dB
Max QE	93%
Anti-blooming	none



Twilight Flat from Iris/
Leaf shutter



Twilight Flat from SBIG
Even-Illumination
Shutter