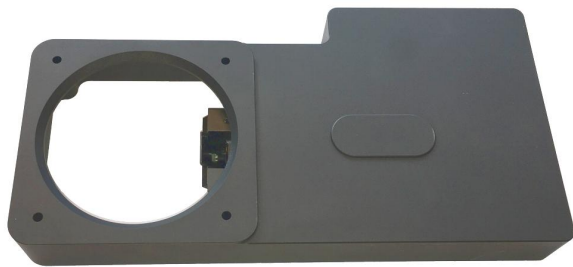




# STXL-6303 STXL-11002 - STXL-16200

- USB 2.0 and Ethernet connectivity
- Superior Two-stage Cooling -60 degrees C below ambient with air only!
- Water Cooling Ready
- The Self-Guiding STXL filter wheel for guiding in front of the filters.
- Uses STX Electronics with Full Frame Image Buffer
- Control Remote Guide Head/Filter Wheel/AO with USB2 Port



*Optional  
STX-GUIDER*

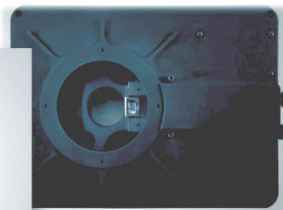
- Self-Guiding in Front of filters
- Lowest Noise 1.8Mhz Readout
- High Precision 8-position Filter Wheel
- User Selectable Internal Image Processing
- 2-Stage TE Cooling -60C delta T with air
- Built-in Web Server
- Full Frame Image Buffer
- Even-illumination (photometric) shutter
- Ethernet and USB 2.0
- Built-in RBI Pre-flash
- Liquid Cooling Capability Standard
- Uses lower cost 50mm round filters
- User Rechargeable Desiccant Plug
- Status, Power and Relay Indicators



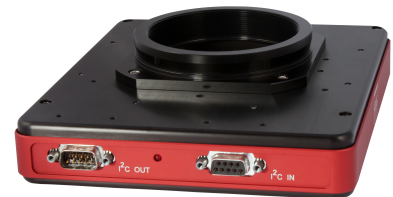
*Twilight Flat from Iris /  
Leaf shutter*



*Twilight Flat from SBIG  
Even-Illumination  
Shutter*



*Optional  
Micron-Precision Filter Wheel with  
Built-in Self-Guiding CCD*



*Optional  
AO-X Adaptive Optics unit*